



# THE NATIONAL PIPE ARCHIVE

Registered Charity Number 1043065

**Accession Number:** LIVNP 2012.06.226

**Description:** Notebook containing drawings and descriptions of pipes from London compiled by David Atkinson.

**Comments:** This is Atkinson's book LONDON Ia - London stamped marks C17th- 18th.

**Key Words:** Clay tobacco pipe; London; Dutch pipe; export pipe; Thomas Park; SV mark; gautlet mark; Queenhithe; Elkins; Merchant mark; Richard Sayer; Pemerton; Richard Waldron.

**Scanned:** PDF March 2017

Any images in this PDF must not be lent, copied to another party, sold or reproduced in any way without prior permission from the National Pipe Archive and the copyright owner, if applicable. Reproduction or publication in any medium is expressly forbidden without written authorisation and should include an acknowledgement worded 'Courtesy of the National Pipe Archive' and quoting the relevant accession number.

3/3

164P

D. R. Atkinson.

116 Phyllis Avenue.

Peacehaven, Sussex.

LONDON

Stamped marks

C17<sup>H</sup> - 18<sup>H</sup>.

BOOK I A.

LIVNP 2012.06.226

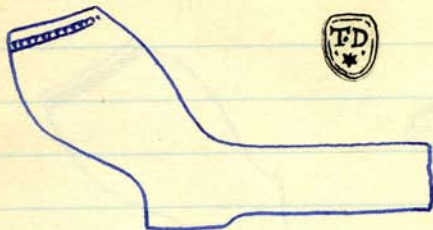
R.P.c1660.

Poorly struck relief mark on heel.



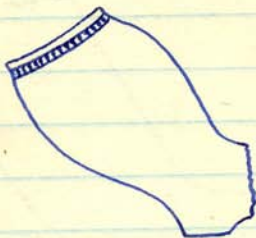
T.D.

c1640-50

*Queenhithe**Shield-shaped relief mark on heel.*

H.S.

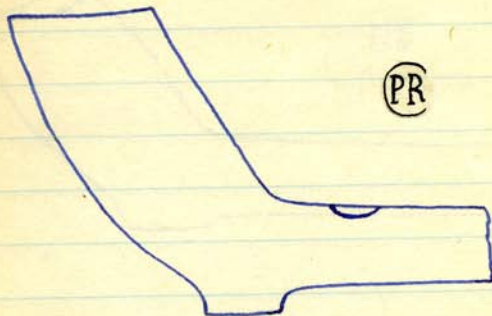
c1640

*Queenhithe*

*Relief mark on small heel. Probably Dutch.*

4  
P. R.

c 1720



Queenhithe

Relief mark on stem.

H.F.

c1670



Queenhithe

Incase unframed letters on heel. The pipe is broken through the mark but the first letter appears to be H.



E

c1640

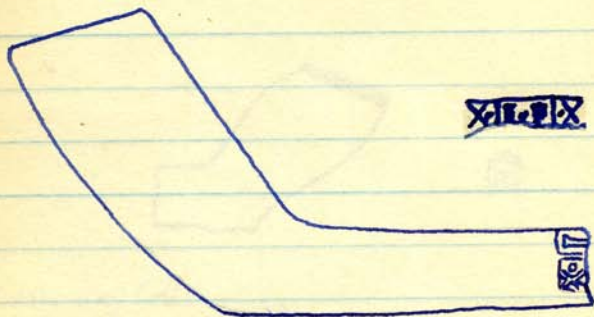


Queenhithe

Unusual relief mark on back of bowl.  
The style is Dutch.



I. F

Unknown makerc1690

Q. H. Dock.

relief

This is the 'American export' type  
very occasionally found in London.

The mark is stated by Ian  
Walker to be I.F and occurs from  
several American sites. Possibly  
James Fox of Boston.

Also appears at Clay Bank,  
Virginia and Williamsburg  
(Capt. Orr's dwelling).

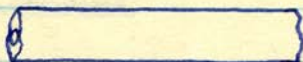
Also Queenhithe (Elkins Coll).

HFc 1600-20

QH

Narraway Coll.

Small relief mark on heel with initials  
incuse. By the size and style of the mark  
this looks like an early Dutch pipe.

DentonProbably Gateshead.Late C18<sup>th</sup>

Stem found at Greenwich has this incuse marking rolled round it.

Thomas Park (1, 2 or 3)GatesheadC17<sup>th</sup> - C18<sup>th</sup>

QH Elkins Coll.

Thick stem with wide bore.



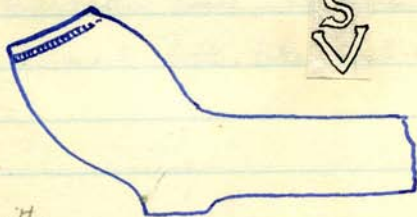


London & Lincolnshire,

c1630-1720



Queenhithe



Queenhithe

Two bowls apparently from the same mould  
with different S marks on stem, incuse.  
Similar early pipes have slightly different  
marks.

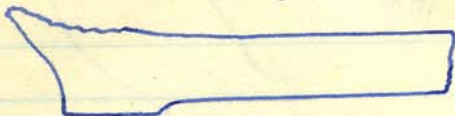


E.Bc1640-50

Relief

Greenhithe

This rather crude wide-lipped bowl  
and mark look like south-west.

Gauntletc1650

QH

Polished pipe with heart-shaped heel.  
Although this does not look an Amersham  
mark it looks West-Country origin.

c1700



QH Etkin Coll.

Large polished Somerset type bowl with  
mark on heel.

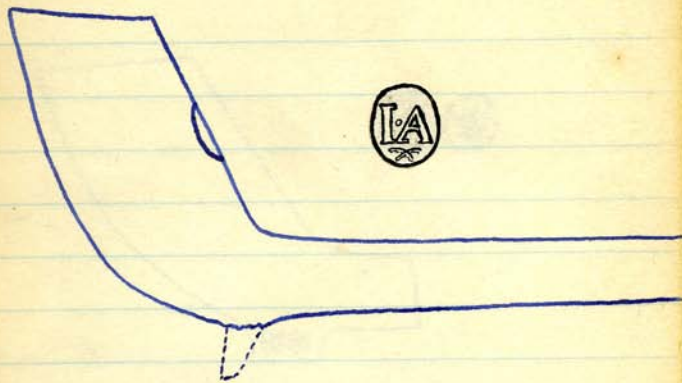
c 1650-60



Q.H.

Mark in relief possibly RR on a  
Salisbury type bowl.



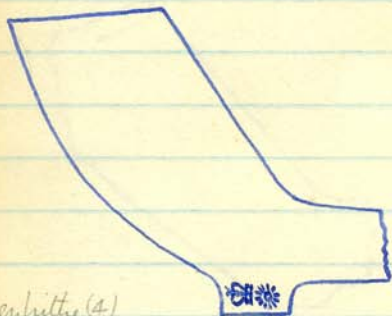
I.Ac 1750

Tanner St. S.E.

A mid-18<sup>th</sup> spur pipe with incuse mark on the back of the bowl - almost unknown on this type of pipe, which is usually identified by moulded initials on the stem.



C1720



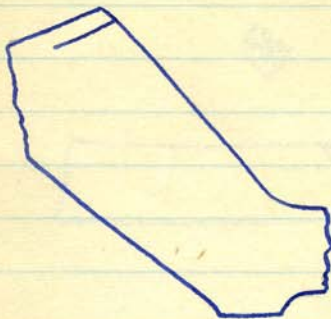
relief

Queenhithe (4)  
Barnes

Crowned sun moulded each side with additional stamped sun in relief on heel. Two types of the mark occur, one having only a dot in centre.

E.B

c.1690



Putney

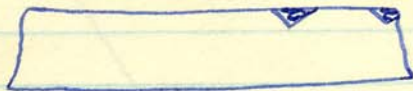
*Polished bowl.*

*This relief mark is slightly larger than  
the similar one found on spur pipes.*

*See page 35, book 1.*

Fleur-de-lis

Probably Dutch.

c17<sup>th</sup>G.R.  
(Crowned)

1714?

Probably  
represents the  
accession of  
George I, 1714.



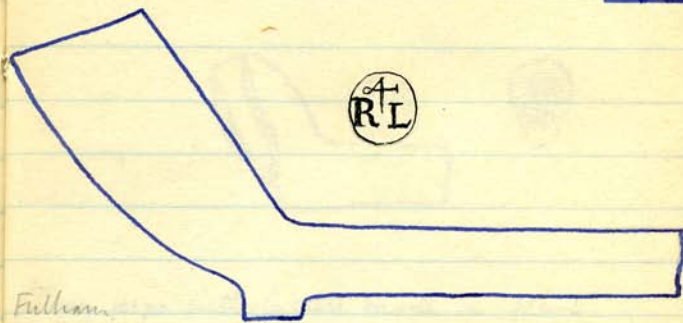
Stem mark  
from Crabtree  
Wharf, Fulham.  
Deposit, c1700-  
1720.

(Elkinn coll.)



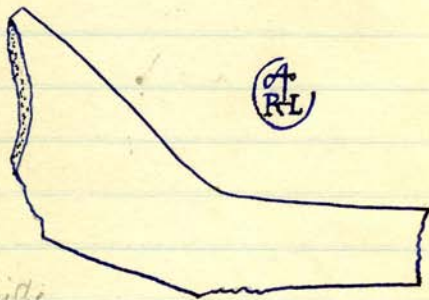
A  
R L

c1710



Fullham

Relief mark, back of bowl. The 'A' is found in earlier merchant's marks.



c.1690

Queensberry

Similar but smaller mark in relief, back of polished bowl.



A.P.

c 1590



Putney

Tiny pipe with incuse mark on flush  
heart-shaped bill.

Another example has been recorded  
from the north (Cheshire area).

Richard Sayer

East Woodhay

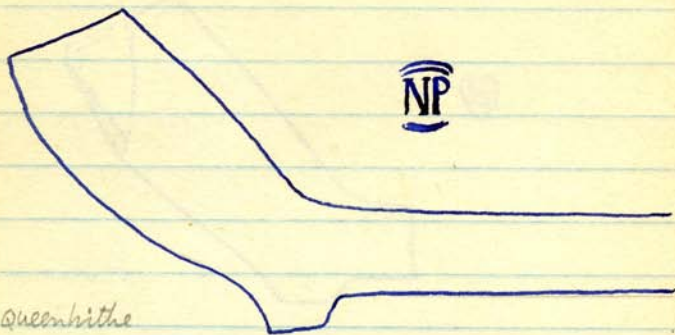
c1700

RICH  
ARD'S  
AYER

Fulham

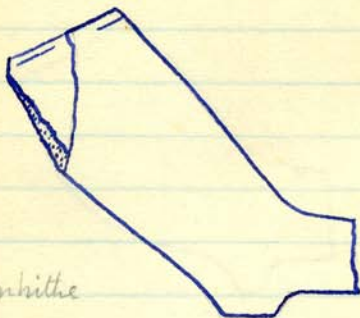
Incase unframed full-name mark  
on stem.

Same, stem and heel, Elkin, Coll. QH.

N.Pc1690

Relief mark, back of bowl. This has been partly obliterated by smoothing off of the pipe. Another example (Ekins G.M.) shows the double frame, circular, complete.

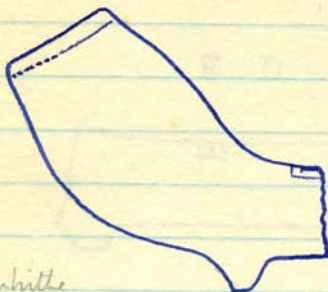


T.S.c.1700

Queenhithe

Relief mark stamped on small base.

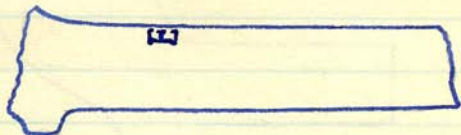


I. I.c1680
*Queenhithe**Small relief mark st. on stem near bowl.*

E.D.

c.1680

E D

*Queenhith**Single incuse letters stamped on stem.**Same type occurs with T or TD see p. 28.*

W.R.c 1660

Green hills

Relief mark. Possibly a northern pipe. 3 examples  
(Northern type mark)



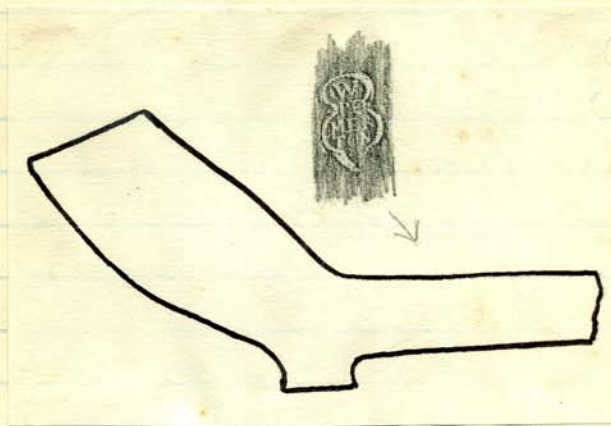
W. L.Pos. William LawrenceC1710-20

Relief mark, back of bowl. 2 examples  
from Crabtree Wharf, Fulham (P. Elkins).

"ORA."

W. Pemerton

c1700



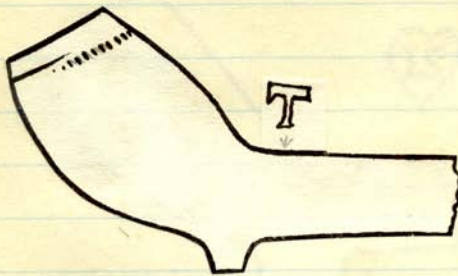
Incuse mark on stem.

QH Elkin's Coll.

Similar type mark to L. Beale at Guildford.

Bowl type is London area Late C17<sup>th</sup>.

These occur in the Epsom area.



Polished bowl. Incuse T on stem.

A similar pipe, unpolished, has incuse

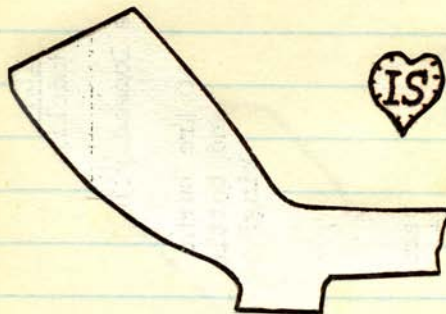
TD on stem. See page 24.

QH Elkins coll.



IS

C1700

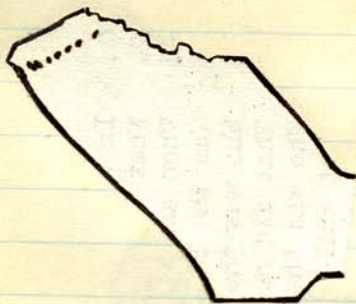


Q.H. Elkins Coll.

*Relief mark on heel.*

B.  
IM

c 1690

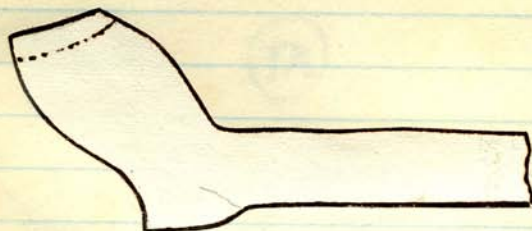


QH Ekin  
Coll.

Polished bowl. Seng relief three  
letter mark on heel.

EX

c1650

Similar To West Country 'ESX' types.

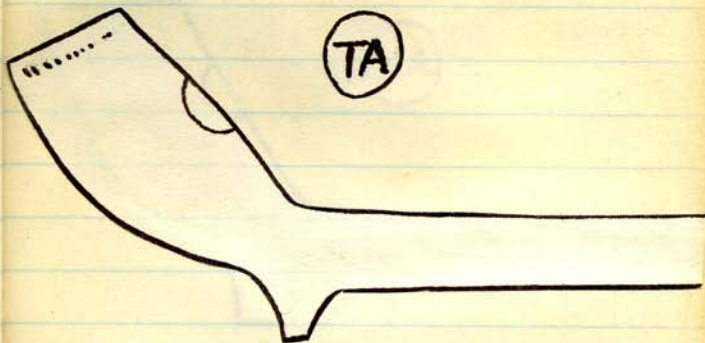
Relief heel mark

QH Elkins Coll



TA

c1690



QHEIkins coll.

*Relief mark back of bowl.*

HA

c1700



Relief mark back of bowl.  
QH Elkin's coll.

VWP

c1690.



QH Etkin coll.

Relief 3-letter mark with lion  
 Dotted style of marking.



IK

c 1730

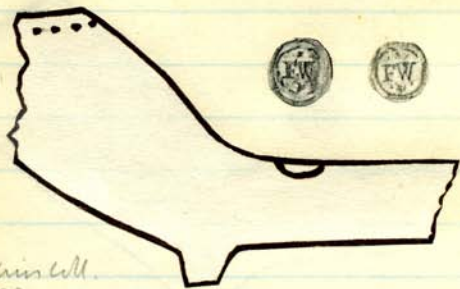


Relief mark, back of bowl.

QH Etkin Coll. (ARA later)

F.W

c 1670-80

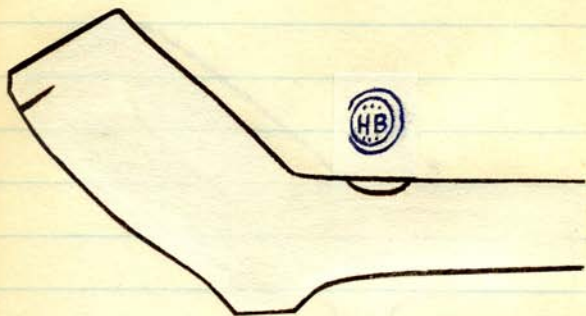


QHElkin coll.  
v. BRA

Relief stem mark. Two similar dies,  
one without the circle of dots.

H. B

C1680-90



QH Elkins coll.

Relief stem mark.

0

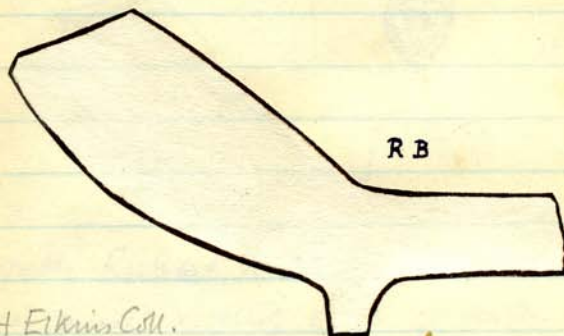
5cm



R.B.

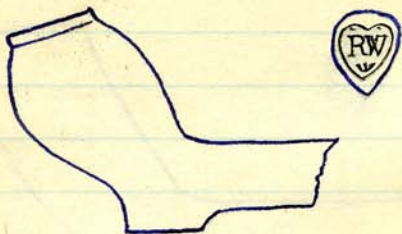
double mark.

C1690



QH Etkin Coll.

Polished bowl with incuse unframed RB  
on stem and repeated on base of spur.

R.W.Winchester type.c1650

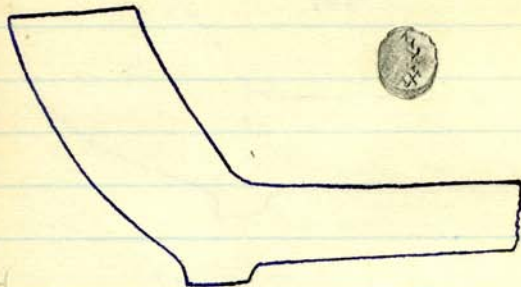
relief

Q.H(2)

Possibly Richard Waldron, 1655-71 who  
used incised x relief marks of similar design.

Merchant's type mark

c1720



Slim polished bowl, relief mark on base.



W. D.

c 1670



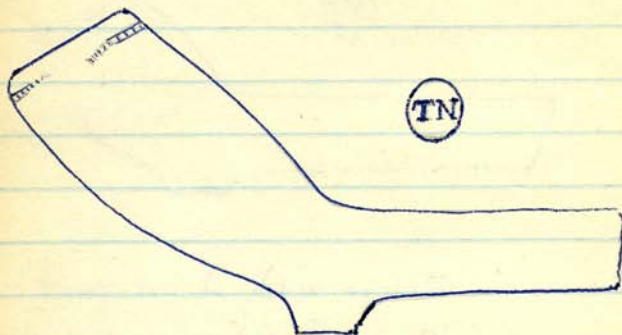
QH.

Incase WD unframed, back of bowl.



TN

c1690

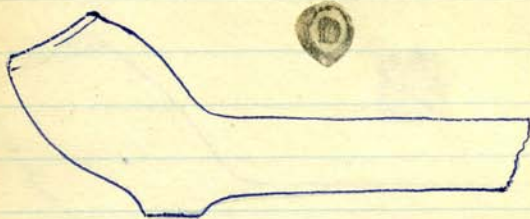


Queenhithe Dock

Clear relief mark on base.

Marks.

c1630



Mark on the base is either an incuse 'O' or a solid relief 'D'.

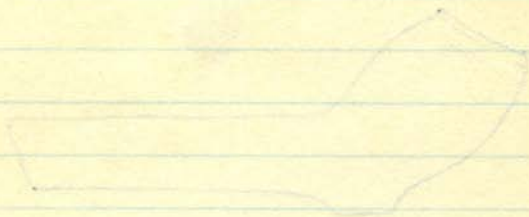


Large relief wheel mark. Crude bowl.



Well shaped bowl of Wilt. style, outline sampler mark, incuse.



S.R.c1670

Bull  
sharp.

Type seldom found marked. Single figure  
S stamped over R just by bowl, as  
with the SV stamps.

